

National Institute for Health and Care Research





We fund or part-fund over 10,000 front-line research delivery staff throughout the NHS



We're funding more than 1,000 active health and social care research projects

**NIHR funds,
enables and
delivers
world-leading
health and
social care
research**

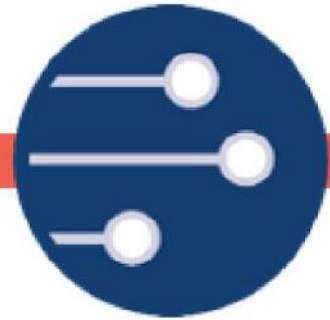


More than 2,000 researchers hold our career development awards

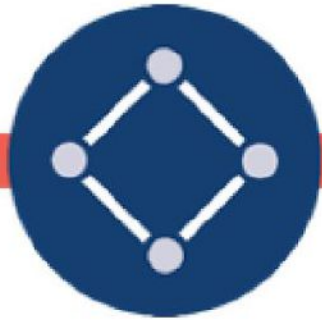


More than a million participants take part in research supported by the NIHR each year

NIHR's mission is to improve the health and wealth of the nation through research.



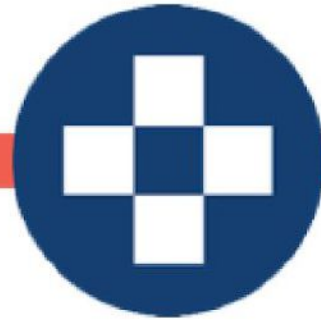
Funding high quality, timely research that benefits the National Health Service, public health and social care



Investing in world class expertise, facilities and a skilled delivery workforce to translate discoveries into improved treatments and services



Partnering with patients, service users, carers and communities improving the relevance, quality and impact of our research



Attracting, training and supporting the best researchers to tackle complex health and social care challenges



Collaborating with other public funders, charities and industry to shape a cohesive and globally competitive research system



Funding applied global health research and training to meet the needs of the poorest people in low and middle income countries



- Transforming the organisation and delivery of health and social care
- Helping people to recover from the medium and longer-term impacts of COVID-19
- Responding to demographic pressures, including the challenges faced by our ageing population
- Tackling environmental and lifestyle drivers of disease risk e.g. air pollution, obesity, smoking, inactivity
- Tackling health inequalities and their wider determinants
- Ensuring that the research we fund is truly inclusive
- Encouraging the safe, effective and equitable implementation of advances in medical science
- Addressing the causes and effects of mental ill health
- Improving maternal and child health as part of a life-course approach
- Responding to global health challenges and changing patterns of disease, including climate change, emerging infectious diseases and the continued threat of antimicrobial resistance
- Accelerating the pace of studies into novel dementia treatment
- Enabling early diagnosis and treatments, including immune therapies such as cancer vaccines
- Sustaining the UK's position in vaccine discovery, development and manufacturing
- Treatment and prevention of cardiovascular diseases and its major risk factors, including obesity
- Reducing mortality and morbidity from respiratory disease in the UK and globally
- Addressing the underlying biology of ageing
- Increasing the understanding of mental health conditions, including work to redefine diseases and develop tools to address them



Proposed priority areas for International Collaboration

Share learning from partners to meet current and future health and social care needs

Prevention and reducing health inequalities

Continuum of care

Healthy aging and chronic conditions

Mutual access to a critical mass of patients to deliver key clinical studies

Globally rare diseases and orphan local populations

Precision medicine

Re/emerging diseases and seasonal diseases

Small effect large population studies

Promote exchange of innovations to address priorities within the local health and care systems

Promoting evaluation and adoption of 'affordable' innovation

Mutual access to cutting-edge Health Tech and innovation

Open up new markets for life sciences companies

Partnering to build research capacity and capability

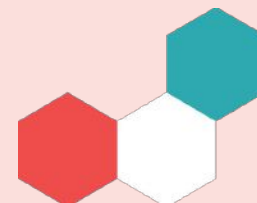
Embed scientists in international networks

Exchange talent, skills, methodologies, ideas and ways of working

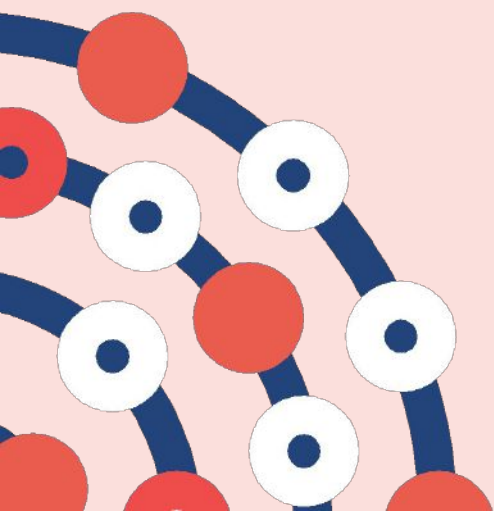
Share international infrastructure

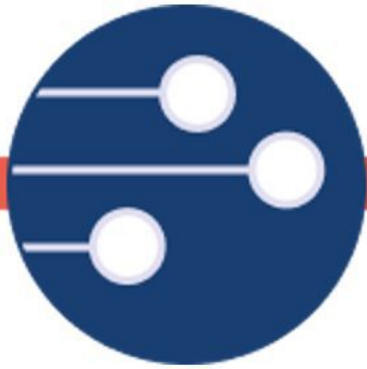
Additional Background Information





Funding high quality, timely research

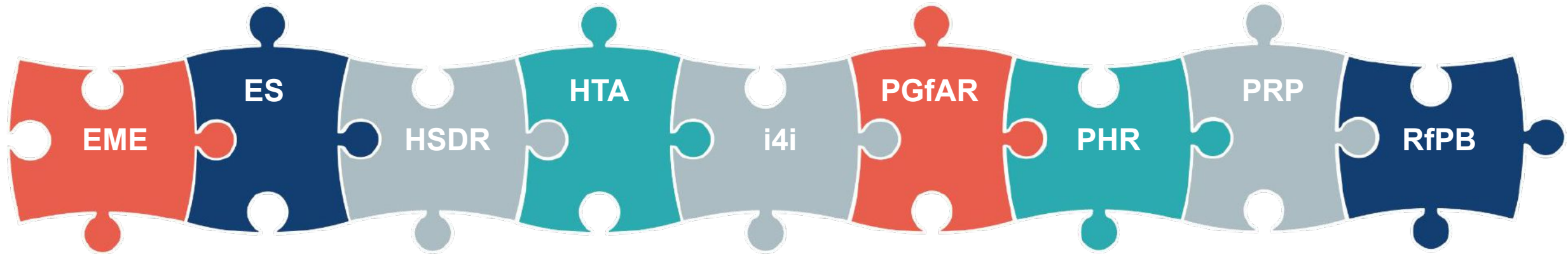




Funding high quality, timely research

that benefits the NHS,
public health and social care

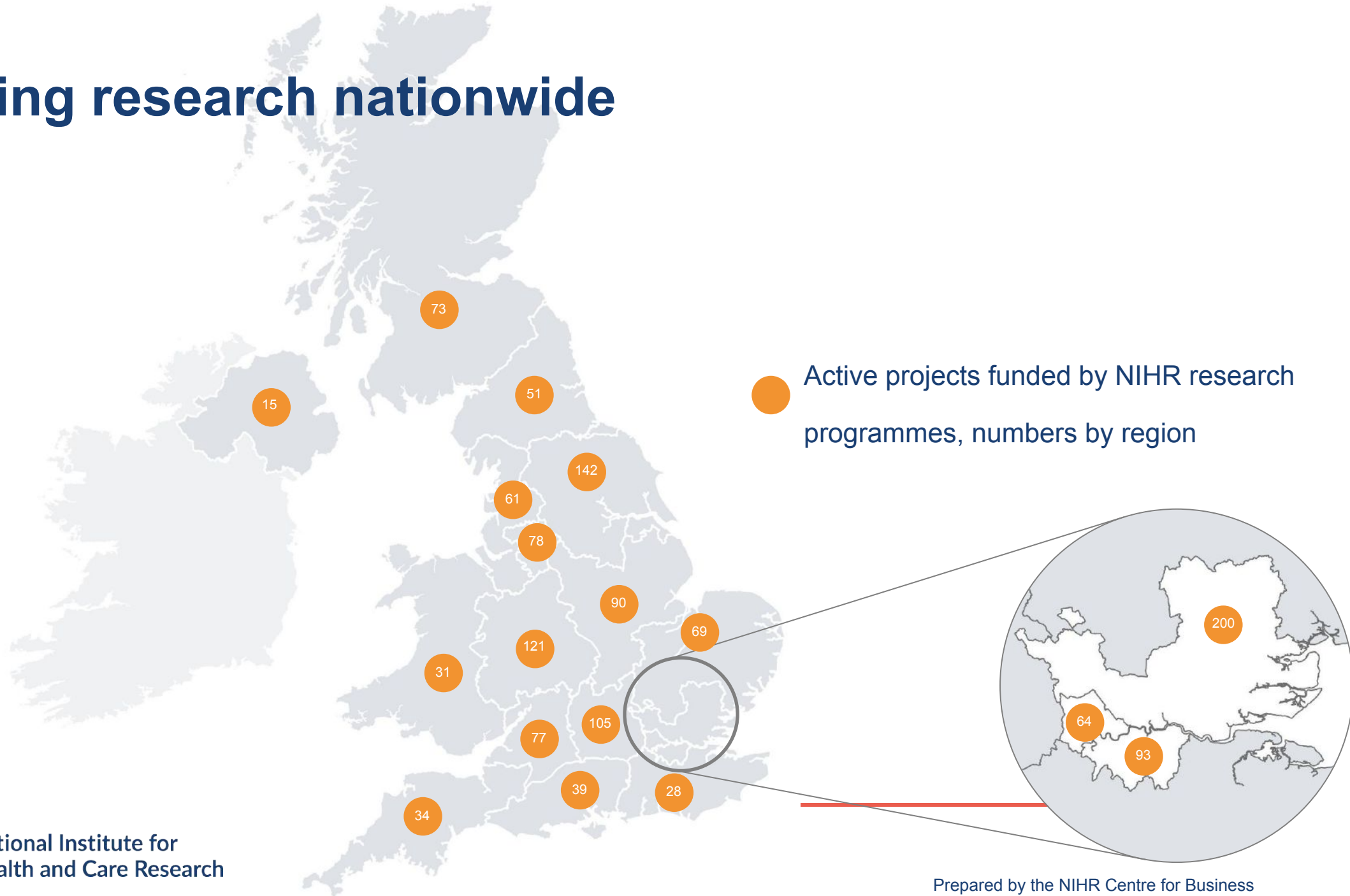
Our research programmes



We have nine research programmes that fund multi-disciplinary health and social care research in both clinical and non-clinical settings to meet a range of evidence priorities, including:

- Clinical evaluation and translation
- Health services and organisation
- Technology development
- Public health
- Social care

Funding research nationwide



A microscopic view of blood, showing several red blood cells (erythrocytes) and two white blood cells (leukocytes). The red blood cells are biconcave and appear as bright red discs. The white blood cells are larger and have a more irregular, spiky appearance. The background is a dark, reddish-brown color.

Surviving sepsis

“Small studies had suggested Levosimendan may have a role in sepsis. However, intensive care unit clinicians in the NHS wanted more evidence. The LeoPARDS trial has provided clear answers to help medical teams make the best decisions to manage such critically ill patients.”

Professor Anthony Gordon, Imperial College London
Chief Investigator of the LeoPARDS trial, funded by the NIHR Efficacy and Mechanism Evaluation programme

Keeping young Londoners connected



“Free bus travel for young people has a mix of benefits overall for the public health. This was reassuring for many public health professionals, who had been concerned about the negative effects.”

Professor Judith Green, London School of Hygiene and Tropical Medicine
Chief Investigator of the ‘On The Buses’ study, funded by the NIHR Public Health Research programme



Helping people stay warm at home in later life

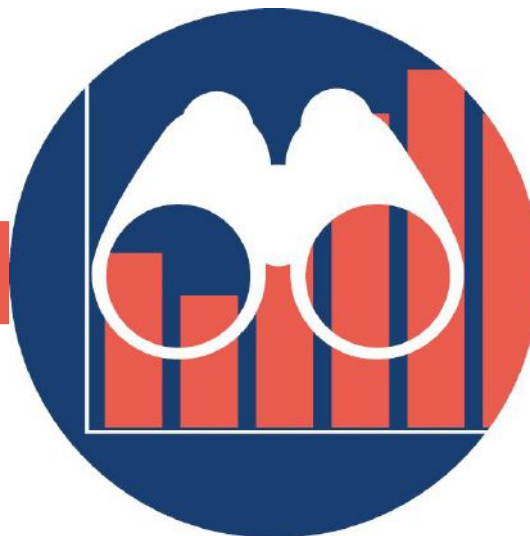
“KWILLT enabled the experiences of older people to be captured in such a way that it challenged assumptions that people had about older peoples’ behaviour regarding home heating.”

Professor Angela Tod, University of Sheffield
Chief Investigator of the Keeping Warm in Later Life (KWILLT) project, funded by the NIHR Research for Patient Benefit Programme

Our research schools and units



**14 Health Protection
Research Units**
in partnership with UK
Health Security
Agency




**15 Policy
Research Units**



**5 Blood and
Transplant
Research Units**
in partnership with
NHS Blood and
Transplant



**3 Research
Schools**
in primary care,
public health,
and social care



Supporting people with learning disabilities

“Research in social care is vital to improving the lives of people with learning disabilities. The outcomes of this project were particularly encouraging in that they were immediately used by the social care provider to develop a new model of support.”

Professor Peter McGill, University of Kent
Chief Investigator of preventing challenging behaviour of adults with complex needs in supported accommodation
Funded by the NIHR School for Social Care Research

Sharing research funding and findings



NIHR Funding
and Awards



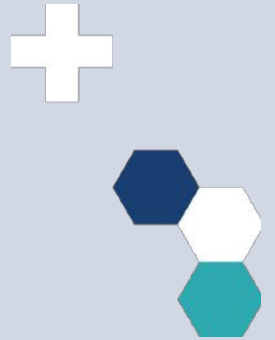
NIHR Journals
Library



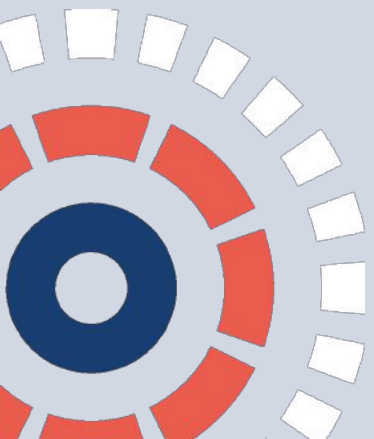
NIHR
Evidence



NIHR Open
Data



Investing in world-class expertise, facilities and a skilled delivery workforce

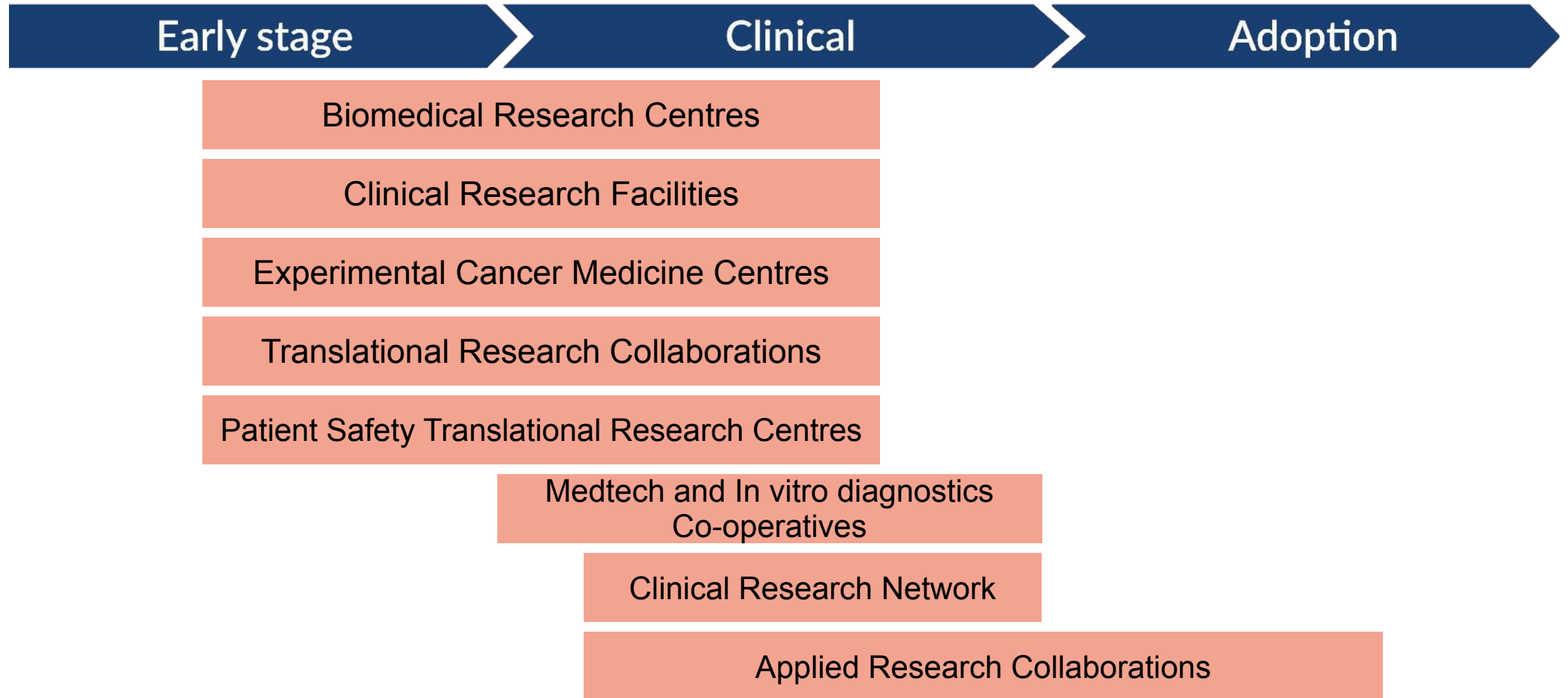




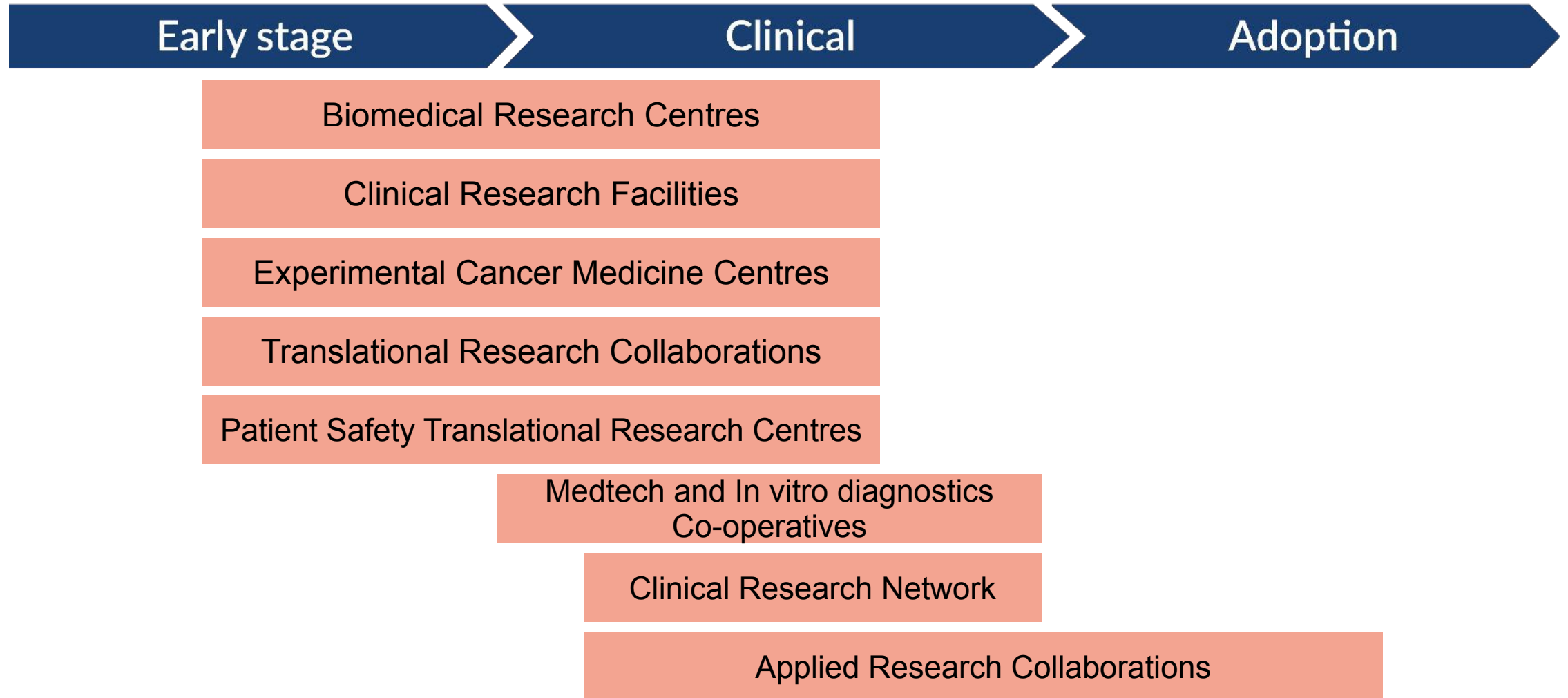
**Investing in world-class
expertise, facilities and a
skilled delivery workforce**

to translate discoveries into
improved treatments and services

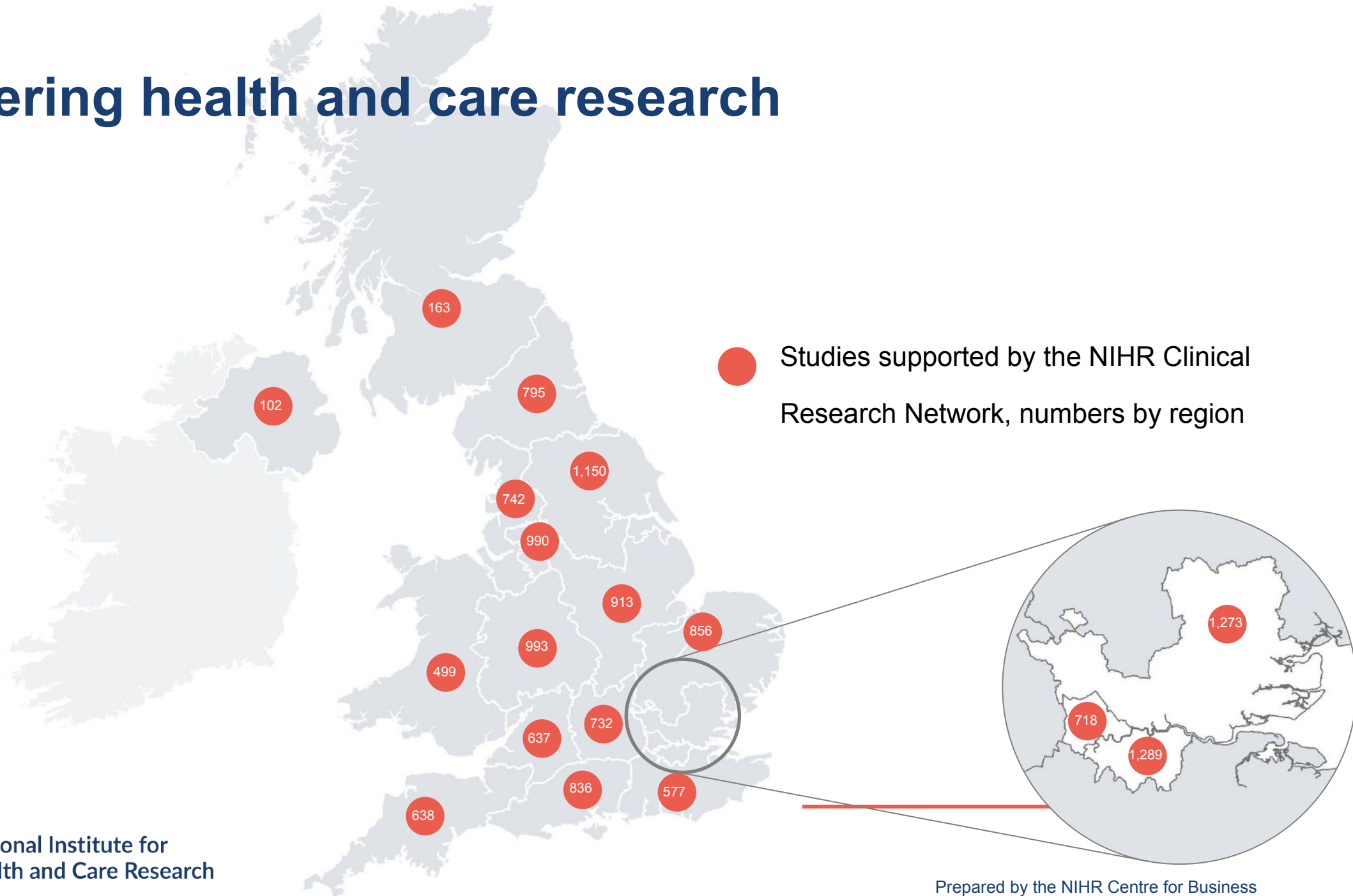
Our research infrastructure



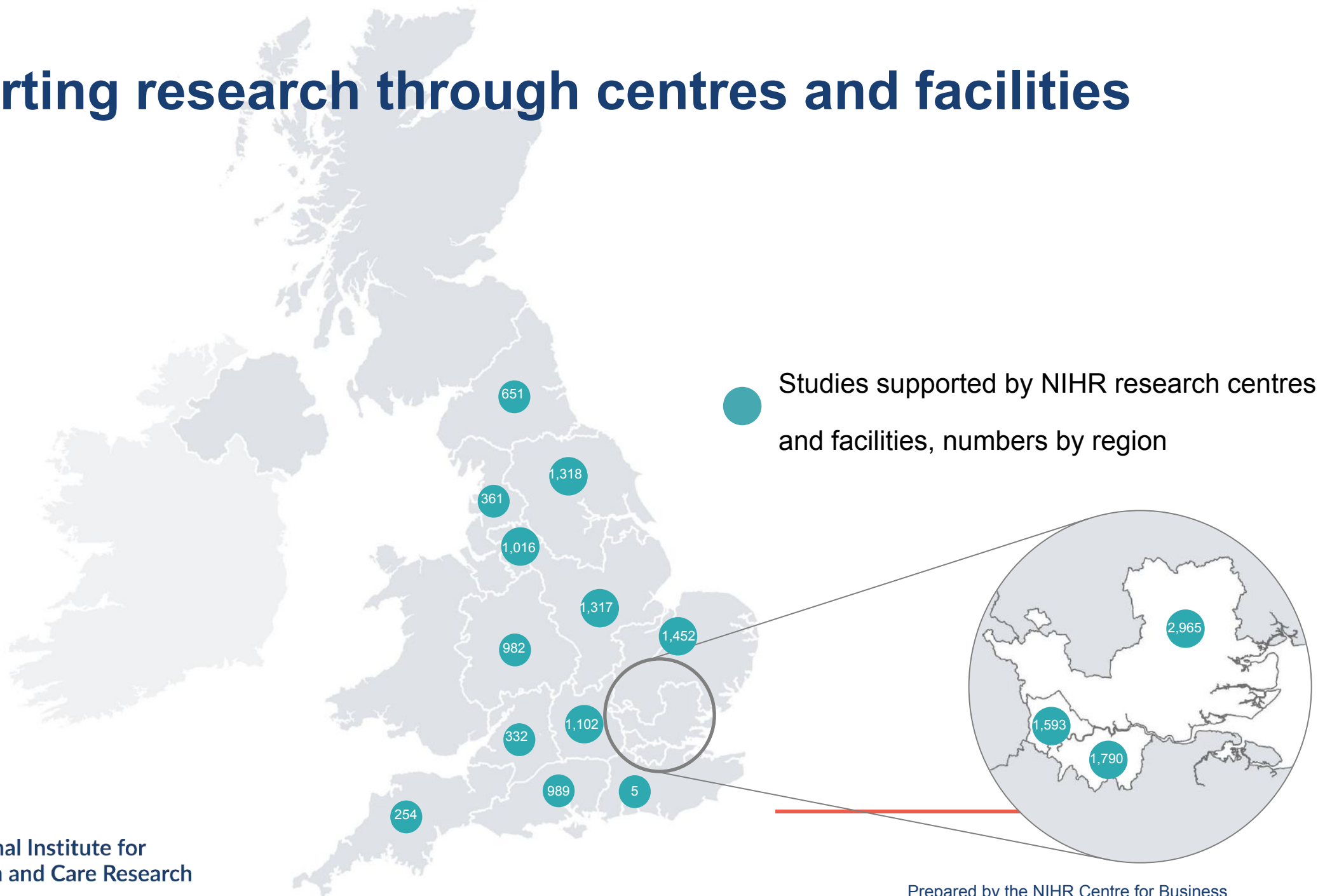
Our research infrastructure



Delivering health and care research



Supporting research through centres and facilities



Our supported researchers



“It is no exaggeration to say that I have seen patients’ lives saved by new treatments developed by British science and delivered in the NHS to a patient for the first time in the world. This couldn’t and wouldn’t have happened without our NIHR funding.”

Professor Bryan Williams
Director

NIHR University College London Hospitals Biomedical Research Centre

Our supported researchers



“Research is now part of my career, and combining it with my role as a clinical psychologist not only benefits my clinical practice, it also gives me a wider perspective.”

Dr Sam Malins
Clinical Psychologist
NIHR Applied Research Collaboration East Midlands

Our skilled delivery workforce



“Programmes like 70@70 allow nurses and midwives to take their knowledge and apply it to research in ways that we wouldn’t otherwise be able to. Using our insight and skills we are able to spot gaps in service and care provision and create interventions that have a big impact.”

Dr Abigail Barkham
NIHR 70@70 Senior Nurse Research Leader



Leading the world in frailty management

“Since the electronic frailty index has been implemented there have been around 1.2 million people assessed for the presence of frailty, and a clinical confirmation made before any decisions on interventions.”

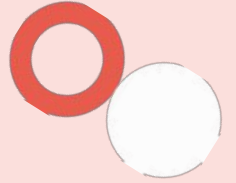
Professor Andrew Clegg
Lead of the Older People with Frailty theme at the NIHR Applied Research Collaboration Yorkshire and Humber



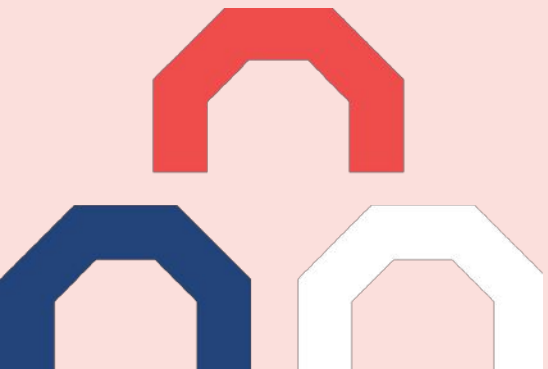
Transforming out-of-hospital care for people who are homeless

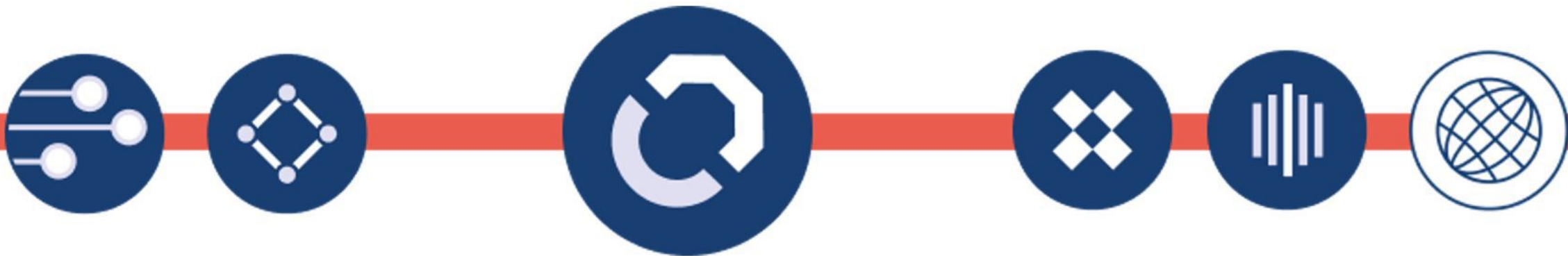
“Although I'd worked within a multi-disciplinary team for many years, I'd not worked with so many different agencies across the health, social and charity sector.”

Lizzie Bizwell, Northamptonshire Healthcare NHS Foundation Trust
Clinical Research Nurse on the Effectiveness and Cost-effectiveness of 'Usual Care' versus 'Specialist Integrated Care' study
Funded by the Health and Social Care Delivery Research Programme



Partnering with patients, service users, carers and communities

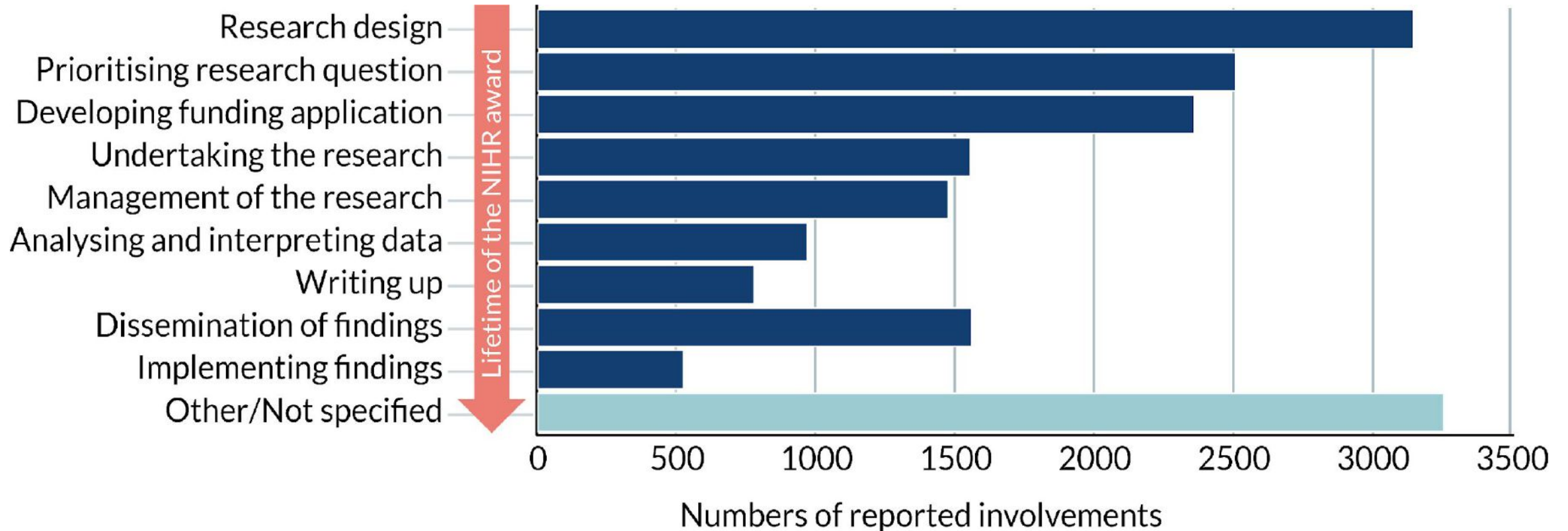




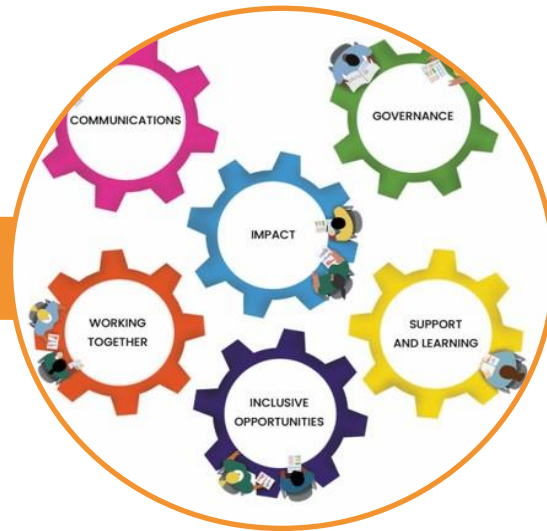
Partnering with patients, service users, carers and communities

improving the relevance, quality
and impact of our research

Involving patients and the public in shaping research



Championing patient and public involvement



Collaboration with others



Producing and sharing guidance



Influencing systems and processes

Providing opportunities to get involved with research



“Patients and the public bring a unique perspective to research. I’ve been involved in research in lots of ways and at different levels but the aim is always the same: to make sure research is relevant, makes a difference and is accessible to a wide range of communities.”

Una Rennard



Putting public engagement at the heart of research

“Pretty much every aspect of the website was improved through the involvement of families and the public. There were many times when they pointed out ways the things could be misinterpreted that I would never have seen in a million years.”

Professor Christina Pagel, UCL

Chief Investigator of the Partial Risk Adjustment in Surgery study, funded by the NIHR Health and Social Care Delivery Research programme



Providing opportunities to take part in research



I'm looking for research about

Menu 

Keyword e.g. cancer, drug name



Location e.g. city, postcode



Search for study

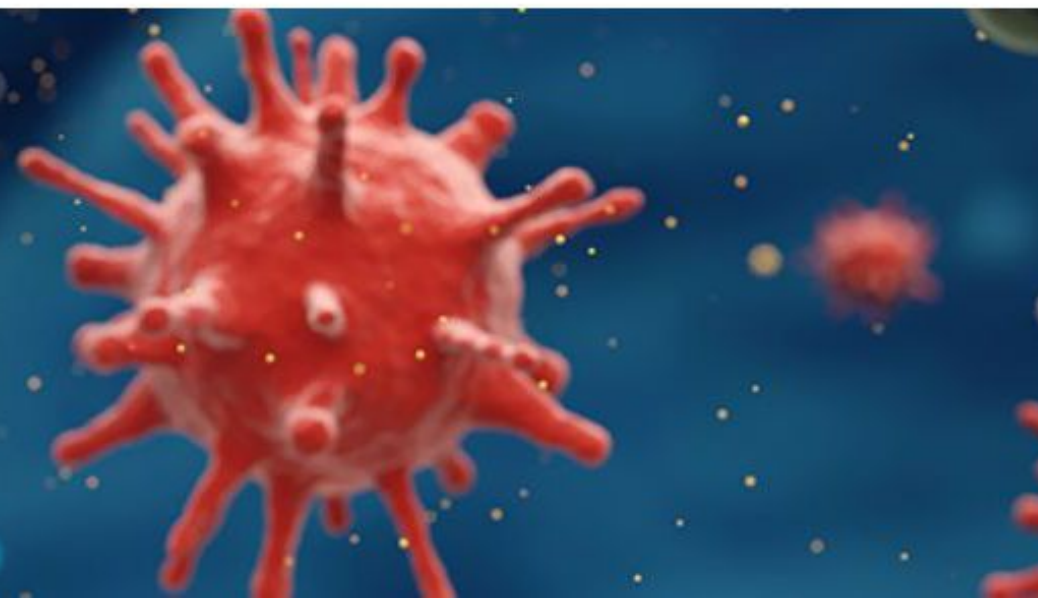
or

View conditions

We are here to help you find out about health and social care research taking place in England, Northern Ireland, Scotland and Wales.

Finding new effective antiviral treatments for COVID-19

The PANORAMIC study aims to find new antiviral treatments to improve outcomes for people in the community with COVID-19.



Opportunities to take part in research



“Once you know someone who’s been affected by COVID-19, it makes a difference. Others were wary about vaccinations and I realised that people like me need to be seen to volunteer. If someone from the same community takes part, it’s one level of separation removed.”

Yusuf from London

Opportunities to take part in research



“The drug I took on the trial changed my life and completely altered my approach to food. I am so glad I was able to take part in this research and hope that it paves the way for the drug to be approved in future. I would encourage anyone who has the chance to take part in research to do so.”

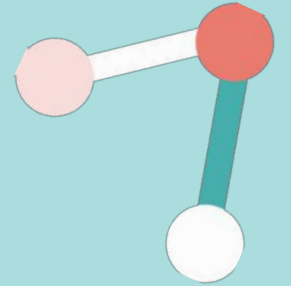
Jan from Kent

Opportunities to take part in research

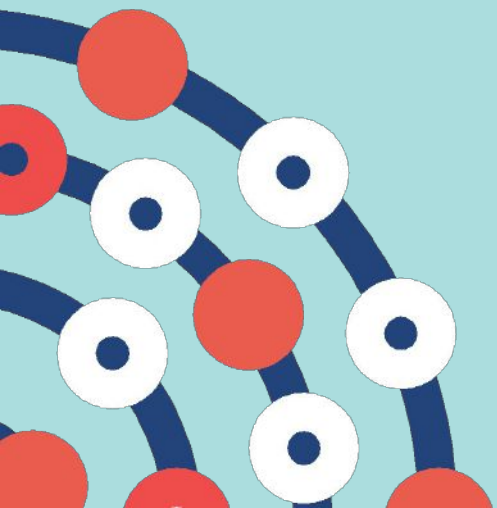


“The fact is, you can either be a part of the problem or part of the solution. The more research, the easier the prognosis and treatment. Everybody wins. There is no better way I can thank all of those who brought me back to life.”

Colin from Cambridge



Attracting, training and supporting the best researchers



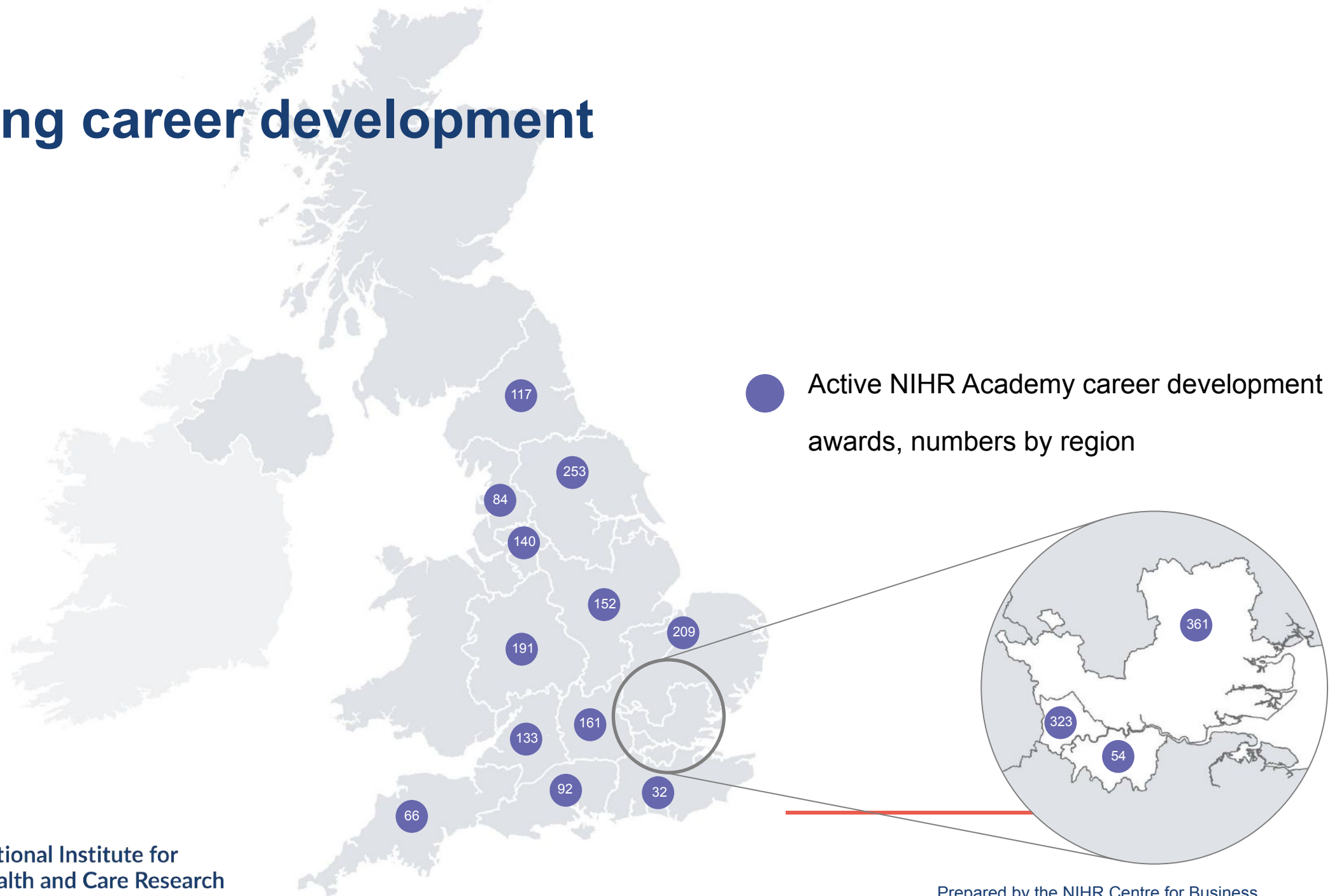


Attracting, training and supporting the best researchers

to tackle complex health
and social care challenges

NIHR RESEARCH CAREER PATHWAYS	PRE-DOCTORAL	DOCTORAL	POST-DOCTORAL (EARLY)	POST-DOCTORAL (SENIOR)	CHAIR
Research Training Schemes for all	Pre-doctoral Fellowship	Doctoral Fellowship	Advanced Fellowship Development & Skills Enhancement Award		Research Professorship
Research Training Schemes for practitioner academics health & social care professionals	HEE/NIHR Pre-doctoral Clinical and Practitioner Academic Fellowship NIHR Pre-doctoral Local Authority Fellowship	HEE/NIHR Doctoral Clinical and Practitioner Academic Fellowship NIHR Doctoral Local Authority Fellowship	HEE/NIHR Advanced Clinical and Practitioner Academic Fellowship		
Research Training Schemes for clinical academics doctors and dentists	In-Practice Fellowship Academic Clinical Fellowship		Clinical Lectureship		
Additional Opportunities	Biomedical Research Centres • Applied Research Collaborations Patient Safety Translational Research Centres • NIHR Schools • Health Protection Research Units				

Funding career development



Our award holders



"A clinical academic career offers the opportunity to seek out and explain what and how you can become an expert generalist. I have learned to critically appraise evidence, develop my own research ideas and apply the learning to my everyday clinical practice."

Mohana Ratnapalan
NIHR Academic Clinical Fellow

Our award holders



"What really keeps me interested in research, and clinical practice, is that my work is relevant to both. Some of the research I've conducted I use day-in, day-out in the emergency department. This combination, and protected time in each, prevents burn-out and keeps me constantly engaged."

Dr Damian Roland
NIHR Doctoral Research Fellow

Our award holders



“My NIHR Research Professor award has provided me with opportunities to develop my research ideas much faster, and it has helped me to have stronger collaborations with colleagues across the NHS and public health contexts.”

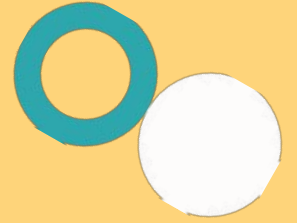
Professor Amanda Daley
NIHR Research Professor



How artificial intelligence is revolutionising ophthalmology

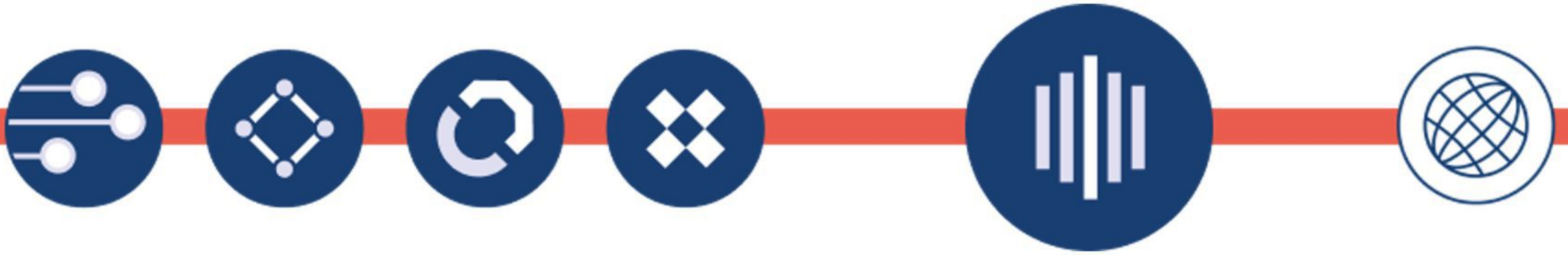
“What drives me is the fact that some people lose sight because they can’t get seen and treated by an eye doctor quickly enough.”

Dr Pearse Keane, Moorfields Eye Hospital
NIHR Clinician Scientist



Collaborating with other public funders, charities and industry





Collaborating with other public funders, charities and industry

to shape a cohesive and
globally competitive
research system

Partnering with the life sciences industry

We support life science companies to translate their new therapeutics, medical devices, diagnostics and digital technologies into the clinic and then onto market.



Partnering with the life sciences industry

Each year our Clinical Research Network



supports
more than **1,500**
industry-funded
research studies

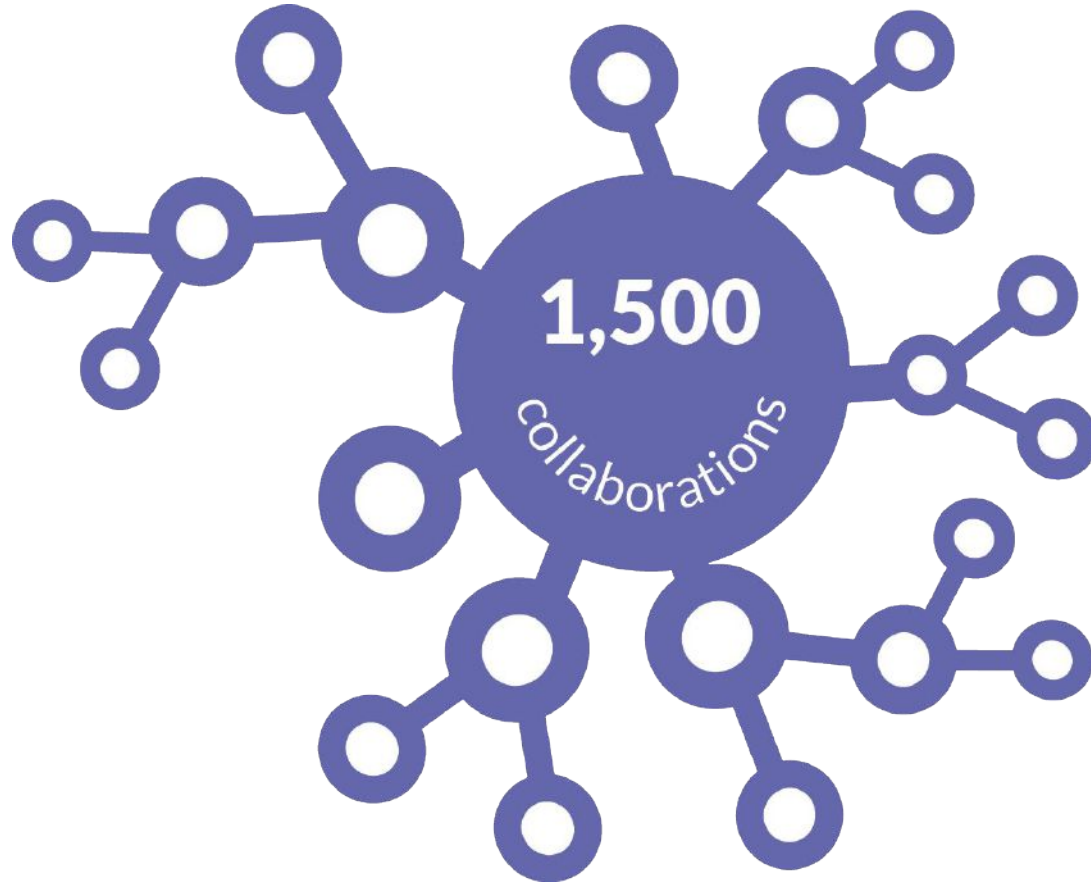


and **recruits**
around **30,000**
participants to
industry studies

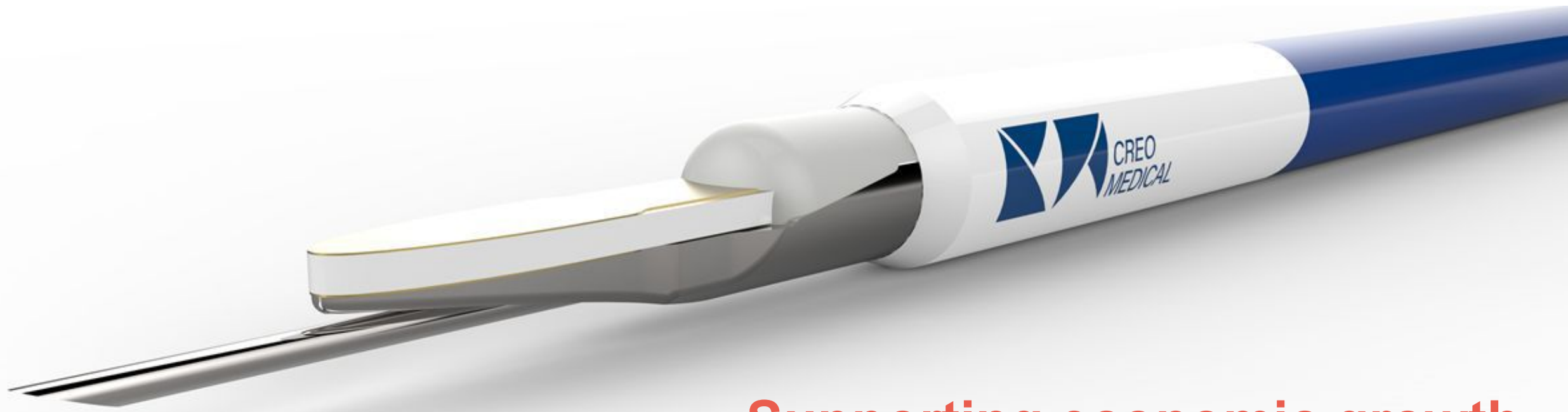


including some
first patients
in the world

Partnering with the life sciences industry



Our research infrastructure supports around 1,500 collaborations with small and medium sized companies each year



Supporting economic growth

“Our i4i funding award was rocket fuel that allowed us to have a much bigger vision that we wouldn’t have otherwise had the audacity to pursue.”

Craig Gulliford, CEO of Creo Medical
Small-to-medium enterprise that received funding from the NIHR Invention for Innovation programme

Partnering with charities and other funders

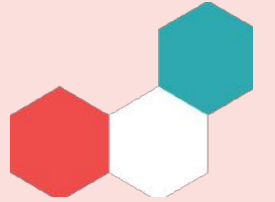


We support nearly 4,500 charity-funded studies every year

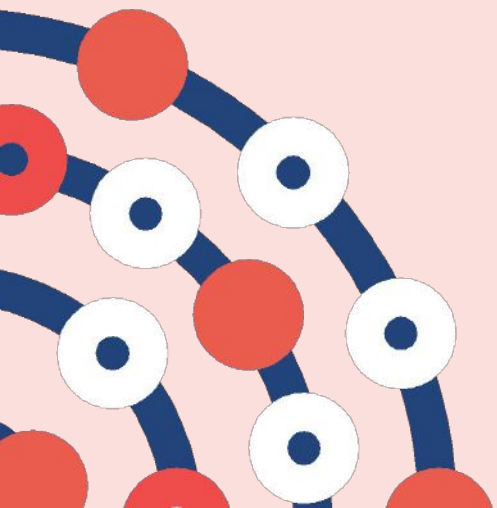
Partnering with charities and other funders

We've established networks that carry out early phase translational research and tackle experimental medicine challenges





Funding applied global health research and training





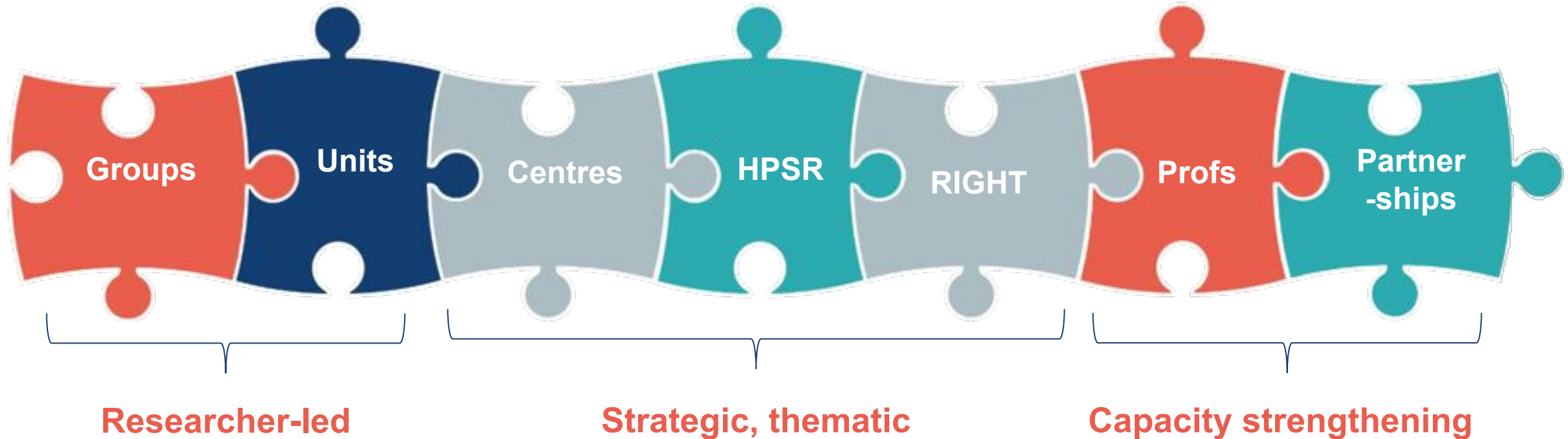
Funding applied global health research and training

to meet the needs of the
poorest people in low and
middle income countries

How we fund: Official Development Assistance

- Our Global Health Research portfolio is delivered through:
 - a) open calls commissioned directly through the NIHR and
 - b) strategic partnerships with global funders and international organisations
- Research is funded through the Department for Health and Social Care Official Development Assistance (ODA) allocation as part of the UK Aid budget
- Activities for the direct and primary benefit of people in ODA-eligible countries, defined by the Organisation for Economic Co-operation and Development's Development Assistance Committee list
- Over £440 million invested in research in Phase 1 (2016-2021)

Our research programmes



We fund global health research on under-funded or under-researched topics through a variety of mechanisms:

- Funding through open calls with no set priority areas
- Strategic and thematic funding for research in key areas
- Partnering with other global funders and building research capacity

Working together for better lung health



“Using our NIHR funding, we are developing, implementing and evaluating interventions to address urgent gaps in respiratory treatment and care. Together we are taking crucial steps to improving respiratory health not only in Asia, but with implications for low and middle income countries around the world.”

Professor Ee Ming Khoo
Programme lead, NIHR Global Health Research Unit on Respiratory Health
University of Malaya, Malaysia

Stay up to date

www.nihr.ac.uk/sign-up

