

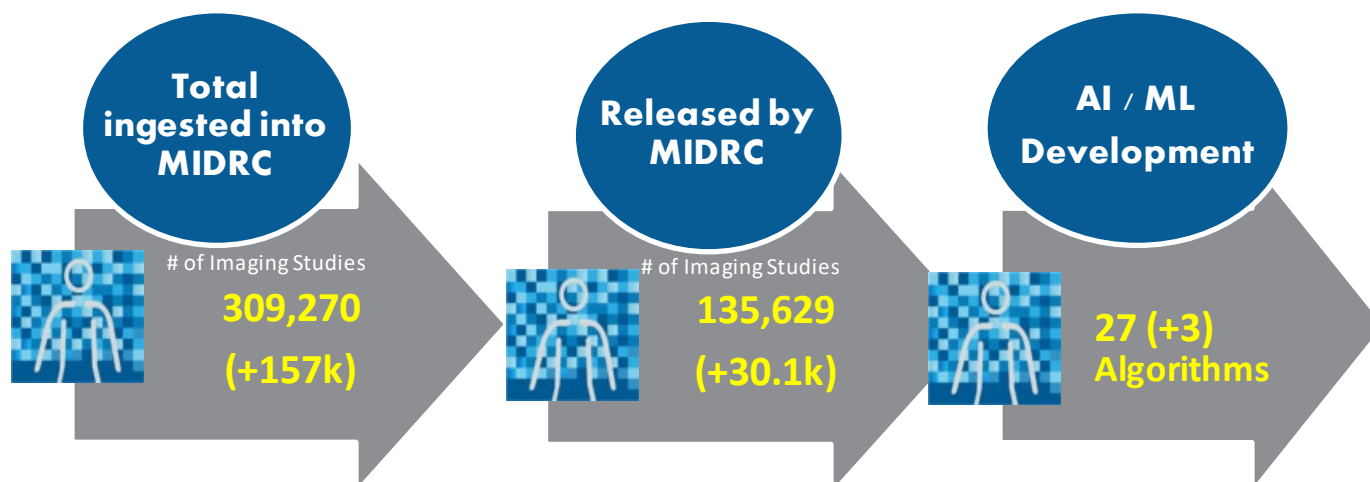
Medical Imaging and Data Resource Center



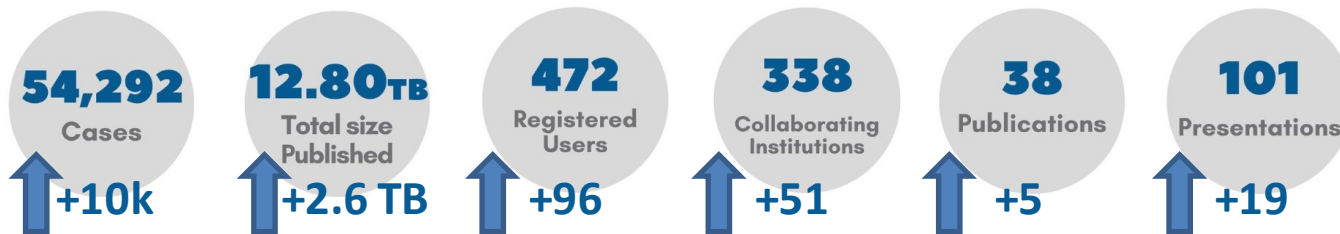
ACCELERATING DATA RELEASE & UTILIZATION

Real world assessment of algorithmic performance towards accelerating development and clinical deployment

May 2023 v. January 2023



Supporting the NIH Data Sharing Policy with DataCite DOI's



Enabling the path to product with the Validation and Regulatory Working Group (VRWG)



Medical Imaging and Data Resource Center

ADDRESSING BIAS AND DIVERSITY IN AI DATASETS



Drukker, et al. (2023) “Towards **fairness** in artificial intelligence for medical image analysis;

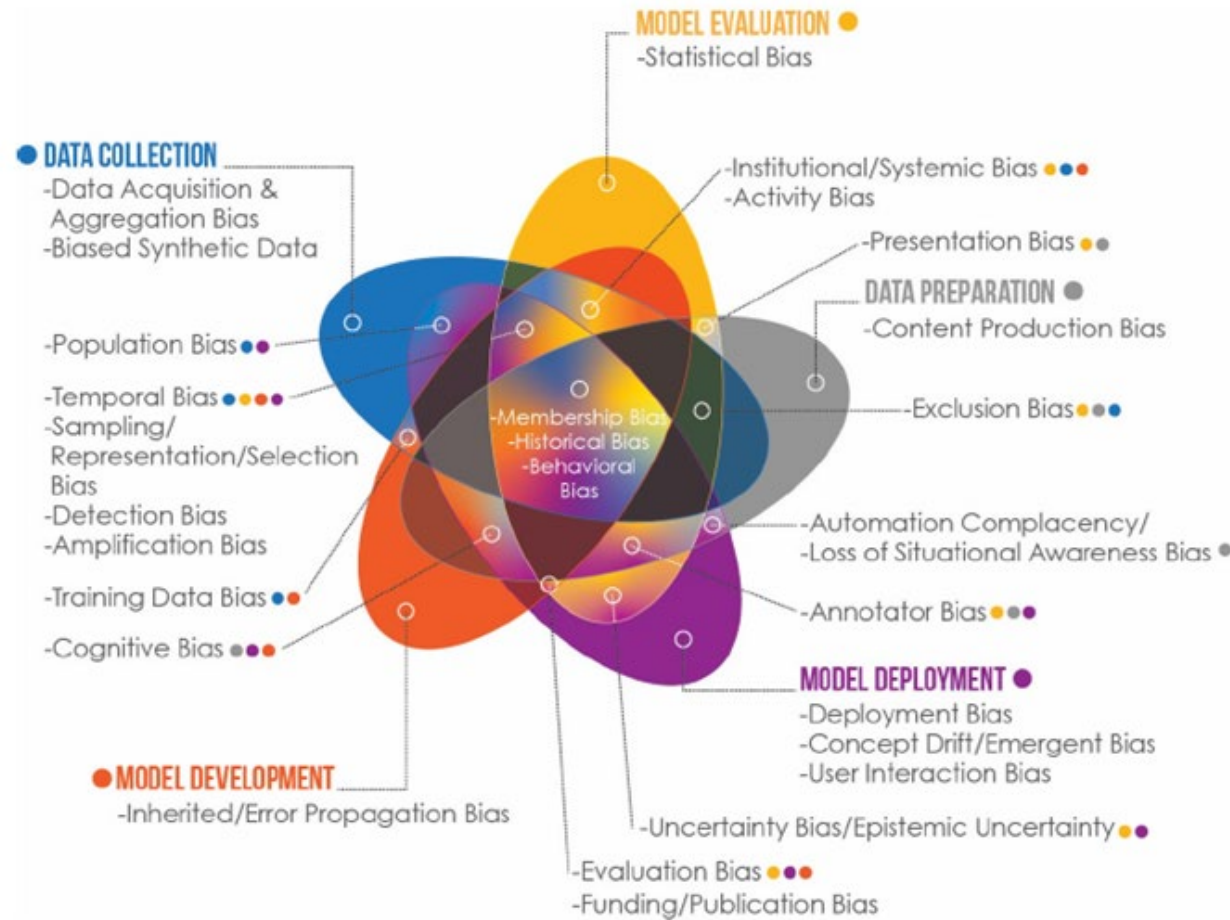
Identification and mitigation of potential biases in the roadmap from data collection to model deployment” JMI 2023

<https://doi.org/10.1117/1.jmi.10.6.061104>

Whitney, et al. (2023)

“Longitudinal **assessment of demographic representativeness** in the Medical Imaging Data and Resource Center Open Data Commons” JMI, *under review*.

<https://arxiv.org/abs/2303.10501>



MIDRC AI/ML Bias Awareness Tool Portal



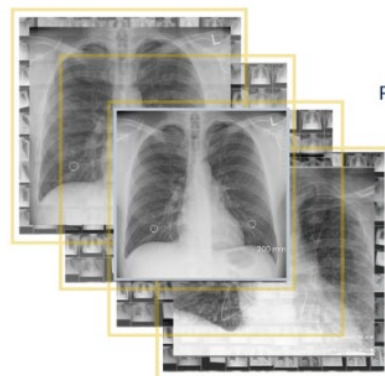
<https://www.midrc.org/bias-awareness-tool-1>

MIDRC mRALE Mastermind Challenge:


AI to predict COVID severity on chest radiographs

Registration opens May 15!


MIDRC mRALE Mastermind Challenge Information




PRIZE
Receive MIDRC support through the FDA regulatory process using the MIDRC Sequestered Data Commons
First of its kind!



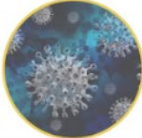
RECOGNITION
Recognition at both AAPM 2023 and RSNA 2023
MIDRC acknowledgment
MIDRC publication contributor credit



LOGISTICS
Details and Registration can be found on the [Challenge platform](#)



DATES
Registration & training phase open May 15, 2023
Validation phase begins June 10, 2023
Challenge concludes July 10, 2023



- | | |
|--|----------|
| 1st Place | \$15,000 |
| 2nd Place | \$8,000 |
| 3rd Place | \$7,000 |
| 4th – 7th Place | \$5,000 |

**mRALE: modified Radiographic Assessment of Lung Edema*



<https://midrc-medici.southcentralus.cloudapp.azure.com/competitions/9>