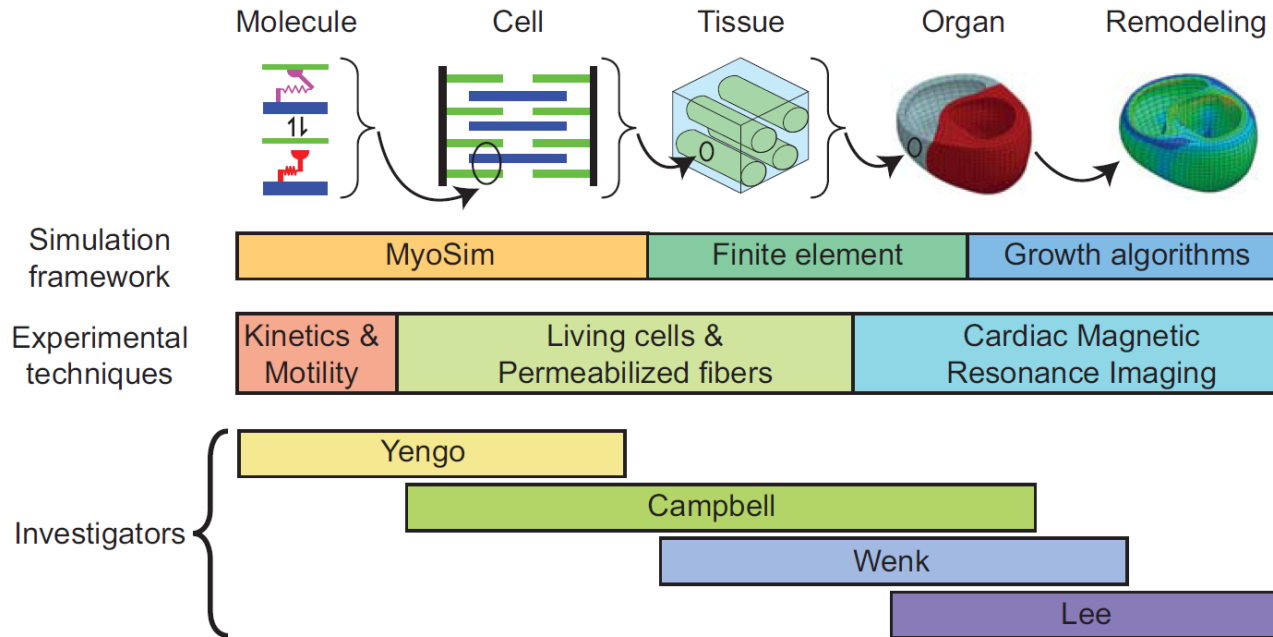


Multiscale Modeling of Inherited Cardiomyopathies and Therapeutic Interventions

U01 HL133359 (Year 1)

Kenneth S. Campbell and Jonathan F. Wenk (University of Kentucky)

- Outline

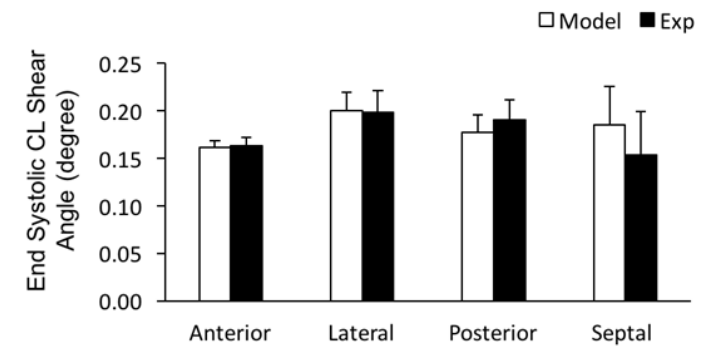
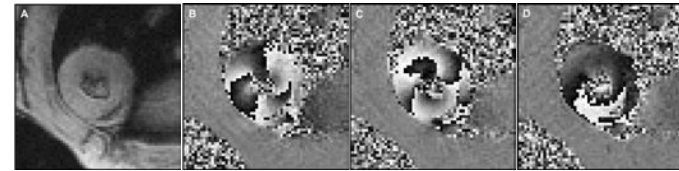
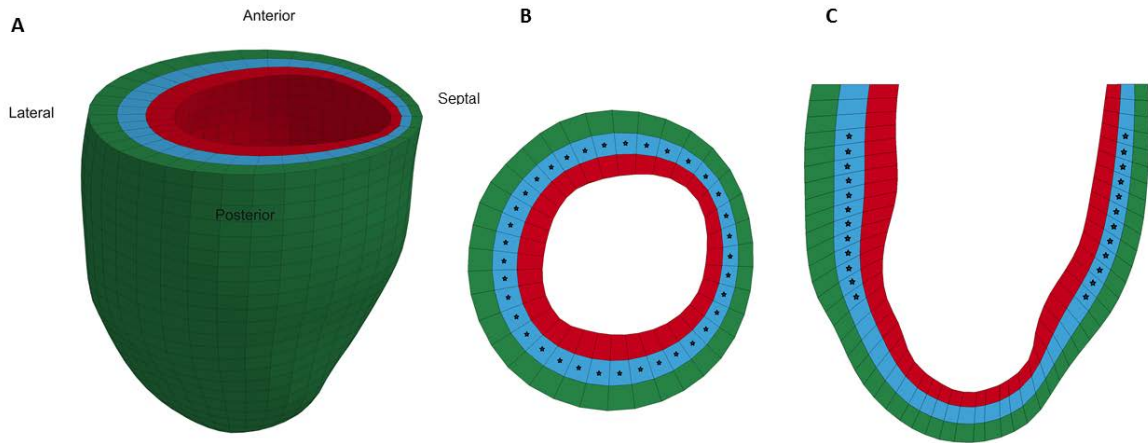


- Unique aspects

- Model the effects of two pharmaceutical treatments in clinical trial.
- Model the effects of genetic mutation that causes HCM.

- Example Model Output and Comparative Metric

- Organ level functional comparison between Model and MRI results



- Compare the functional effects of genetic mutation or treatment to control

