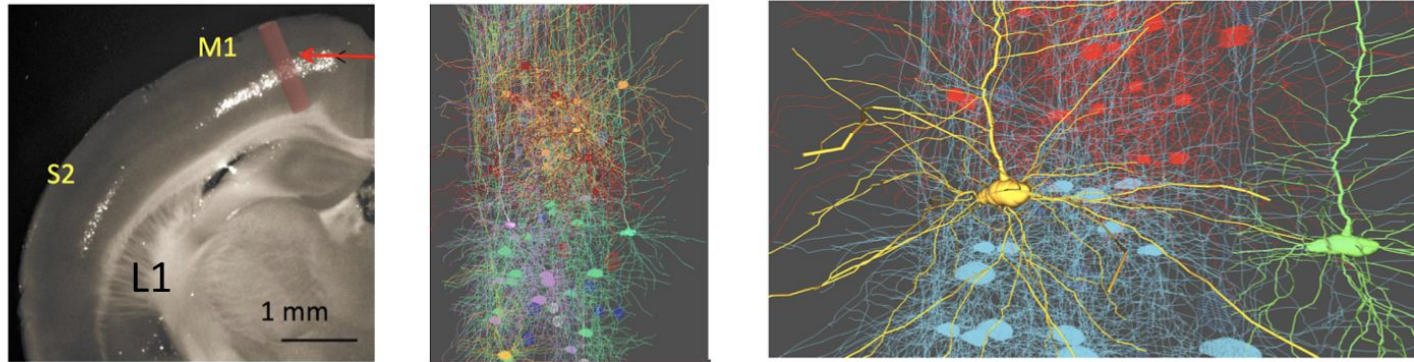


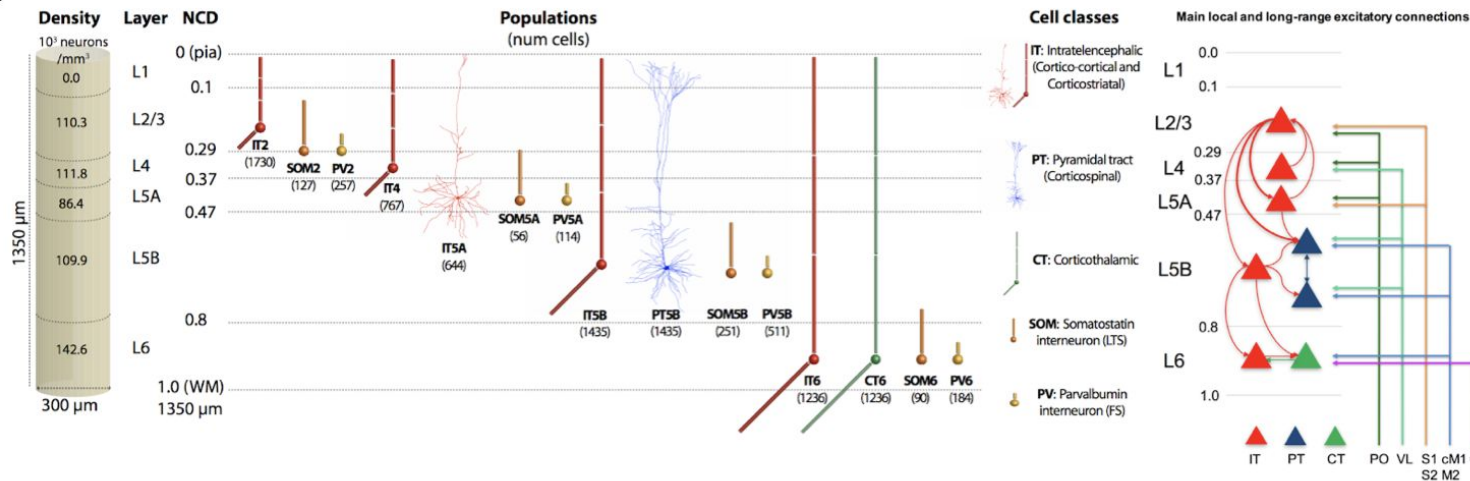
# Detailed model of primary motor cortex

William Lytton, SUNY Downstate U01EB017695

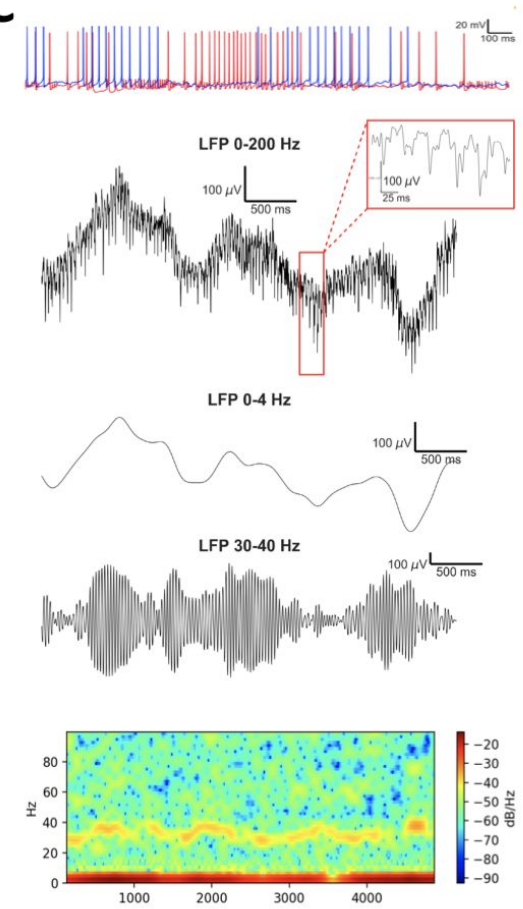
A



B



C



- Coupled ODE and event driven simulation defined in a novel high-level declarative language using *NetPyNE*
- *Gradient descent* and *genetic algorithms* were used to determine parameters for particular cell types.
- Project won the **2017 HPCwire Readers' Choice Award for Best Use of Artificial Intelligence using HPC.**
- End Users: Growing interest in multiscale modeling: Human Brain Project, Blue Brain Project, Allen Brain Institute, many individual research labs contributing to ModelDB.